

THE PUBLIC INPUT SESSION WILL BEGIN MOMENTARILY



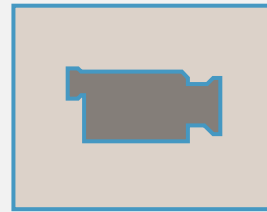


UPSKILLING RFP 1 – NURSE PRACTITIONER (NP) EXPANSION
GRANT PROGRAM
PUBLIC INPUT SESSION

April 1 and April 3, 2025



MESSAGE FROM COUNTY BEHAVIORAL HEALTH SERVICES



A message from:

Nadia Privara

*Assistant Director, Chief Strategy and Finance Officer
County of San Diego Behavioral Health Services*

INTRODUCTIONS AND HOUSEKEEPING



Team

The **Policy & Innovation Center** (PIC) was procured by San Diego County as the Program Administrator of the ELEVATE Behavioral Health Workforce Fund and is partnering with two subcontractors **Social Finance** and **Trailhead Strategies** on implementation. Today's Moderators are from Trailhead:

- Andy Hall
- Erin Henderlight

Housekeeping

Asking a Question/making a comment (we have built in pauses for Q&A):

- Use the chat function *or* raise your hand

WHAT WE PLAN TO COVER



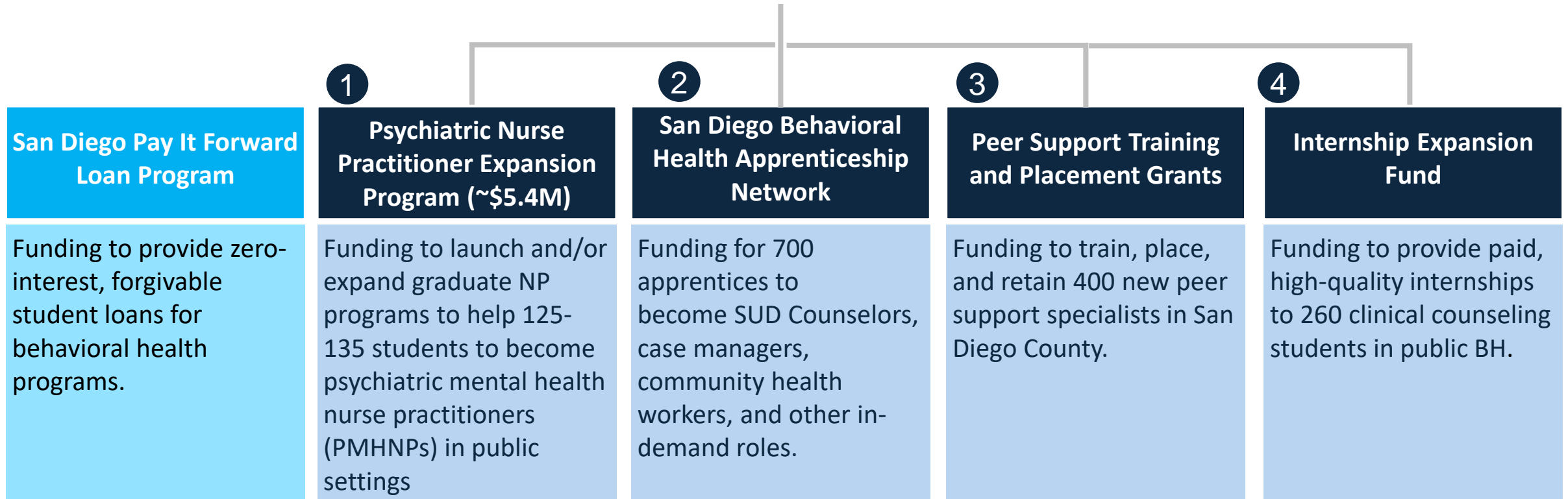
AGENDA

What we plan to cover today:

- What is the ELEVATE Behavioral Health Workforce Fund?
- What is the Nurse Practitioner (NP) Expansion Grant Program?
- What problems is the RFP1 investment trying to solve?
- What interventions do we believe will solve it?
- What outcomes are we looking for?
- What funding do we have and how will we disperse it?
- What is our timeline?
- Who is eligible to respond?
- What partners do we want you to consider?



\$75M to help individuals start, succeed, and advance in County-funded BH programs
Up to ~\$22M will be distributed through four RFPs to be released in May



LOGIC MODEL

Problem Statement

- There is a need for additional Psychiatric Mental Health Nurse Practitioners (MSN-PMHNP or PMHNP-DNP) in the County
- Shortage of clinical sites, funding gaps for supervision, and lower pay in community BH settings are often cited as barriers to expansion, among others.



Inputs

\$5.4M total funding

- **\$3M - \$4M** over four years for educational, clinical supervision costs
- **\$1.4M - \$2.4M** for loan repayment incentives to work in County-funded programs



Beneficiaries

- Working RNs interested in becoming PMHNPs and work in County-funded programs
- Current NP students interested in pursuing clinical sites experiences and post-graduation employment in County-funded programs



Interventions

- Educational institutions develop new and expand existing clinical site partnerships with County-funded programs
- Programs add specialty didactic training and support related to SMI/SED/SUD and community BH
- Loan repayment and forgiveness incentives (paired with 0% interest loans)



Outcomes

- 1-2 new or existing programs committed to educating a total of **125-135 additional PMHNP students** by 2029
- New clinical partnerships with County-funded programs.

ROLES AND ALLOWABLE USED OF FUNDS

University Financial Aid Office

- Partner with the ELEVATE team to offer fully regulated, \$20,000/yr¹ zero-interest, forgivable loans that:
 - Attract students and RNs who may otherwise not be able to afford to reduce hours and/or pay for schooling.
 - Are forgiven after 5-years of employment at a County-funded BH provider.
 - Receive loan payment from the Fund for each year of post-graduation employment in a County-funded program.

1. Up to aggregate maximum of \$40,000 per borrower.

University Faculty, Staff, and Programs

- Funding can be used for:
 - Marketing and outreach to potential students
 - Developing or expanding didactics for SMI/SED/SUD in community BH settings, including specialized tracks (e.g., pediatrics).
 - Administrative support to set up or expand clinical sites at County-funded programs.
 - Pay for faculty support to provide mentoring and clinical supervision

County-Funded Clinical Partners

- Funding can be used to:
 - Engage in the design of structured placement programs/pipeline with University partners
 - Offset the revenue losses by clinical placement sites and their providers (e.g., psychiatrists) to provide supervision
 - For the administrative burden of hosting clinical MSN-PMHNP and/or PMHNP-DNP students

ELIGIBLE LEAD BIDDERS

Requirements:

- Accredited institutions of higher education
- Currently offer graduate NP programs with specialty behavioral health tracks, or commit to offering such programs by Fall of 2026
- Physical campus located in San Diego County
- Financial aid office must partner with Social Finance to offer 0% interest loans

Preferred:

- Existing clinical partnerships and relationships with County-funded behavioral health programs



PAUSE FOR QUESTIONS

RFP PROCESS



- **Awards:** 1-2 Psychiatric Nurse Practitioner programs
- **Planned Contract Term:** July 2025 – December 2029
- **Funding Plans:** We will ask for a plan how you will spend the money you are asking for, and how many more new Psychiatric NP students you can serve.
- **Partners:** We will strongly suggest proposals include MOUs with clinical partners in County-funded programs who have signed on to support students with quality clinical experiences
- **Payment:** Funding will be provided on a cost reimbursement basis, and we will review plans/milestones yearly.
- **Contracts:** Contracts will be made with PIC.
- **Reporting Requirements:** Monthly performance and financial reporting, biannual impact reporting, and annual audits.
- **Performance based:** If significant over/under performance, funds may be moved throughout the Fund.
- **Specialization:** Encouraged to explore specialty tracks (e.g., integrated care, pediatrics, and older adults)

PRIORITY POPULATIONS

Under-resourced individuals and communities

- ✓ Individuals on public assistance (Medi-Cal TANF, CalFresh); and/or
- ✓ who qualify as low income; *and/or*
- ✓ Individuals who reside in census tracts rated as “Less Healthy” by the Healthy Places Index¹

¹ <https://www.healthyplacesindex.org/>

Individuals with language competency

- ✓ Individuals with proficiency in County threshold languages, including: Somali, Arabic, Chinese (Mandarin), Korean, Persian (incl. Farsi and Dari), Spanish, Tagalog, Vietnamese;

Individuals with lived experience

Individuals with lived experience with substance use disorder, SMI and/or receiving care in the public behavioral health system, or with loved ones receiving care in the behavioral health system.

Individual likely to serve in high-needs systems

Demonstrated interest and experience in public behavioral health and/or high-needs systems.

HIGH-LEVEL PROPOSED RFP TIMELINE

The below is how we see the RFP and contracting process for the RFPs. While we may need to modify the general timelines slightly, we remain committed to partner input and transparency.



QUESTIONS FOR YOU:

Are there any major risks or considerations related to this project you would like to share with

Is there anything else you would like to share to inform the RFP process?

QUESTIONS?



Key Contacts



County of San Diego Behavioral Health Services

Engage.BHS@sdcounty.ca.gov



Stephanie Gioia-Beckman

Senior Director, Workforce & Community Impact

sgioiabekman@thinkpic.org



Hydie Hudson

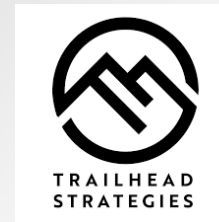
Vice President, Impact Investments

hhudson@socialfinance.org

Kia Kavoosi

Director, Impact Investments

kkavoosi@socialfinance.org



Andy Hall

President & CEO

andyhall@trailheadstrat.com