

THE PUBLIC INPUT SESSION WILL BEGIN MOMENTARILY





ELEVATE

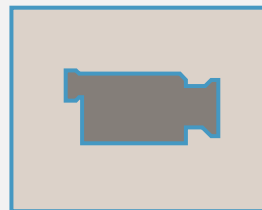
Behavioral Health Workforce Fund

PROGRAM #3: PEER SUPPORT TRAINING GRANT PROGRAM

April 2 and April 4, 2025



MESSAGE FROM COUNTY BEHAVIORAL HEALTH SERVICES



A message from:

Nadia Privara

*Assistant Director, Chief Strategy and Finance Officer
County of San Diego Behavioral Health Services*

INTRODUCTIONS AND HOUSEKEEPING



Team

The **Policy & Innovation Center** (PIC) was procured by San Diego County as the Program Administrator of The ELEVATE Behavioral Health Workforce Fund and is partnering with two subcontractors **Social Finance** and **Trailhead Strategies** on implementation. Today's Moderators are from Trailhead:

- Andy Hall
- Erin Henderlight

Housekeeping

Asking a Question/making a comment (we have built in pauses for Q&A):

- Use the chat function *or* raise your hand

WHAT WE PLAN TO COVER



AGENDA

What we plan to cover today:

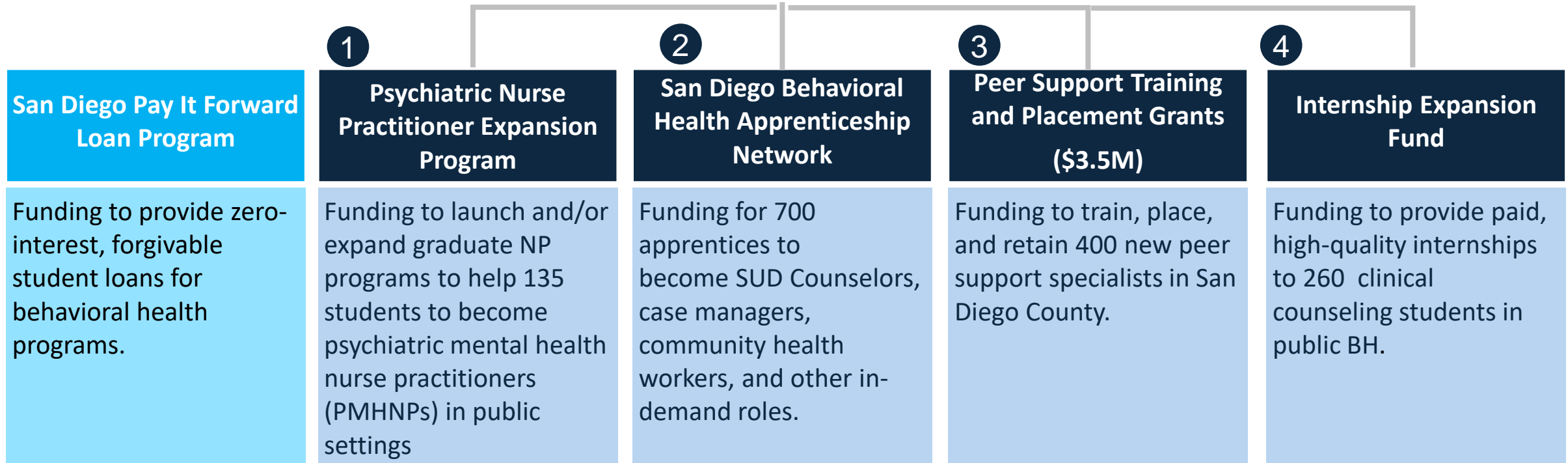
- What is the ELEVATE Behavioral Health Workforce Fund?
- What is Program #3: the Peer Support Training Grant Program
- What problems is the program trying to solve?
- What interventions do we believe will solve it?
- What outcomes are we looking for?
- What funding do we have and how will we disperse it?
- What is our timeline?
- Who is eligible to respond?
- What partners do we want you to consider?



ELEVATE

Behavioral Health Workforce Fund

\$75M to help individuals start, succeed, and advance in County-funded BH programs
Up to ~\$22M will be distributed through four RFPs to be released in May



WHAT IS A MEDI-CAL PEER SUPPORT SPECIALIST?



Certified Medi-Cal Peer Support Specialists provide recovery-oriented, culturally appropriate services that promote engagement, socialization, self-sufficiency, self-advocacy, natural supports and are trauma aware.

- **California Mental Health Services Authority (CalMHSA)**

WHAT IS A MEDI-CAL PEER SUPPORT SPECIALIST?

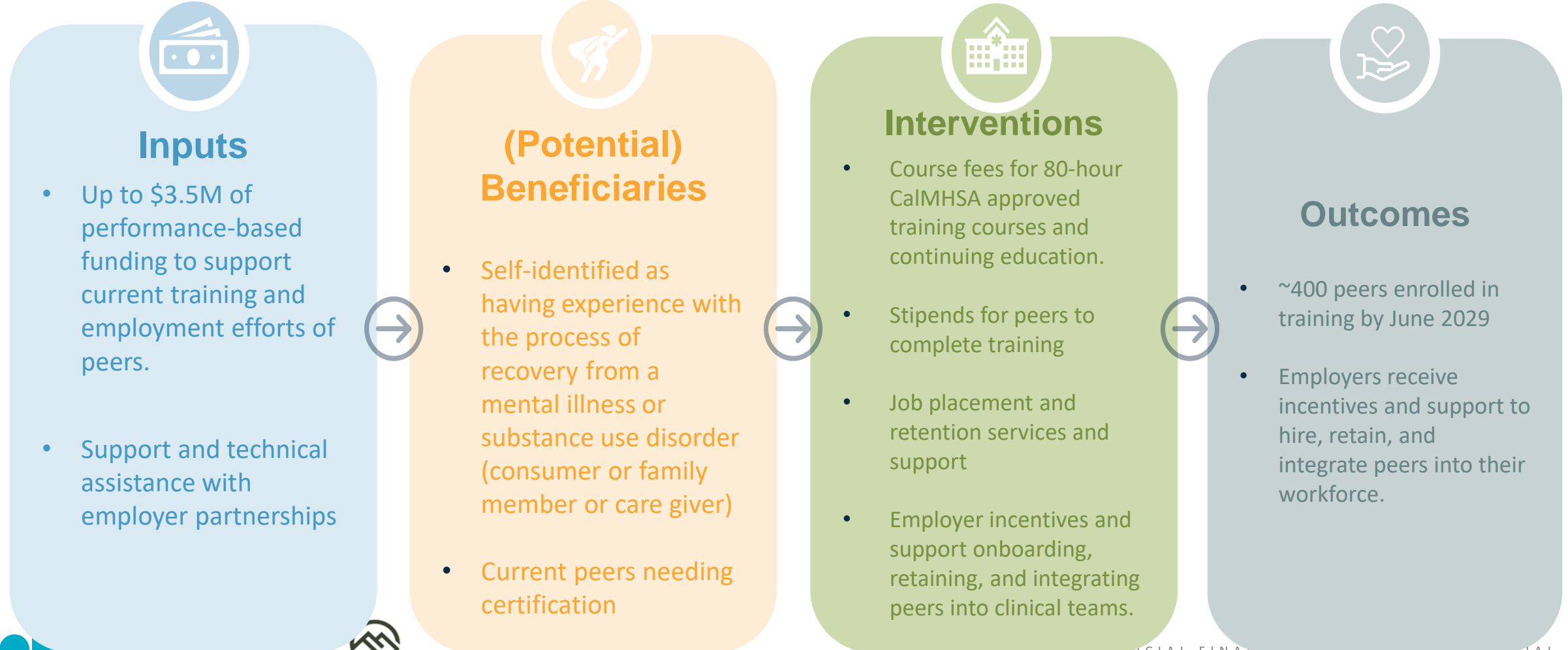


1. Be at least 18 years of age.
2. Possess a high school diploma or equivalent degree.
3. Be self-identified as having experience with the process of recovery from a mental illness or substance use disorder, either as a consumer of these services or as the parent, caregiver or family member of a consumer.
4. Be willing to share their experience.
5. Have a strong dedication to recovery.
6. Agree, in writing, to adhere to the Code of Ethics.
7. Successfully complete the 80-hour training requirements for a peer support specialist through a [CalMHSA-approved training entity](#).
8. Pass the certification examination.

LOGIC MODEL

Problem Statement

- Many employers are interested in hiring more peers, but report challenges finding qualified applicants, integrating peers into clinical teams, retaining peers, and providing upward advancement for peers.



The background is a solid light blue color. In the top-left and bottom-right corners, there are decorative wavy lines in a slightly darker shade of blue, creating a sense of movement and depth.

PAUSE FOR QUESTIONS

ELIGIBLE ENTITIES AND PARTNERS

Lead Agency must be a CalMHSA approved Medi-Cal Peer Support Specialist Certification training provider.

ELIGIBLE ENTITIES AND PARTNERS

CalMHSA Approved Training Agency (Lead)

- Recruit and enroll peers
- Deliver 80-hour certification training
- Provide certification exam preparation and support
- Provide stipends to peers
- Provide job placement assistance
- Provide or arrange for post-employment supportive services for peers
- Establish revenue sharing/employer incentive agreements with partner employers (optional)

San Diego Public Behavioral Health Employers

- Interview and hire certified peers
- Onboard and supervise peers, with plans to effectively integrate them into clinical teams
- Report employment outcomes to lead agency for 180 days
- Explore/receive hiring incentives from public employment programs, including WIOA and CalWorks, as appropriate.

Referral and Supportive Service Partners

- Refer interested trainees
- Provide services and support to individuals and employers, which may include:
 - Career coaching and job placement assistance
 - Childcare assistance
 - Transportation
 - Financial planning/management
 - Emergency cash assistance
- Support retention and integration of peers into clinical teams

The background is a solid light blue color. In the top-left and bottom-right corners, there are decorative wavy lines in a slightly darker shade of blue, creating a sense of movement and depth.

PAUSE FOR QUESTIONS


CONTRACT STRUCTURE

- **Planned Contract Term:** July 2025 – June 2029 (with outcomes payments occurring through 2031)
- **Contracts:** Expect 1-3 contracts between lead agency and PIC
- **Total Amount Available:** \$3.5M
- **Performance based:** If significant over/under performance, funds may be moved throughout the Fund

PLANNED PAYMENT STRUCTURE

Pay point	Amount
Enrollment in CalMHSA approved 80-hour training course	\$1,000
Completion of Medi-Cal Peer Support Certification	\$2,000
Job or Post-Secondary Education Placement Trainee is placed in a related job and/or continues their education in a field related to behavioral health at an accredited institution of higher education	\$2,000
180-day retention Trainees remains employed 6-months after the placement date	\$3,500
Total	\$8,500

Expectation: A portion of these funds will be used for stipends, course and certification fees, and shared with employer hiring and retention incentives.

The background is a solid light blue color. In the top-left and bottom-right corners, there are decorative wavy lines in a slightly darker shade of blue, creating a sense of movement and depth.

PAUSE FOR QUESTIONS

PLANNED RFP TIMELINE



The below is how we see the RFP and contracting process for the RFPs. While we may need to modify the general timelines slightly, we remain committed to partner input and transparency.



QUESTIONS FOR YOU:

Are there any major risks or considerations related to this project you would like to share with

Is there anything else you would like to share to inform the RFP process?

QUESTIONS?



Key Contacts



County of San Diego Behavioral Health Services

Engage.BHS@sdcounty.ca.gov



Stephanie Gioia-Beckman

Senior Director, Workforce & Community Impact

sgioiabekman@thinkpic.org



Hydie Hudson

Vice President, Impact Investments

hudson@socialfinance.org

Kia Kavosi

Director, Impact Investments

kkavosi@socialfinance.org



Andy Hall

President & CEO

andyhall@trailheadstrat.com